

Configuring a Network License for D-Lab

Version 1.0

Author: Damböck



ERGONEERS
FROM SCIENCE TO INNOVATION

Network License

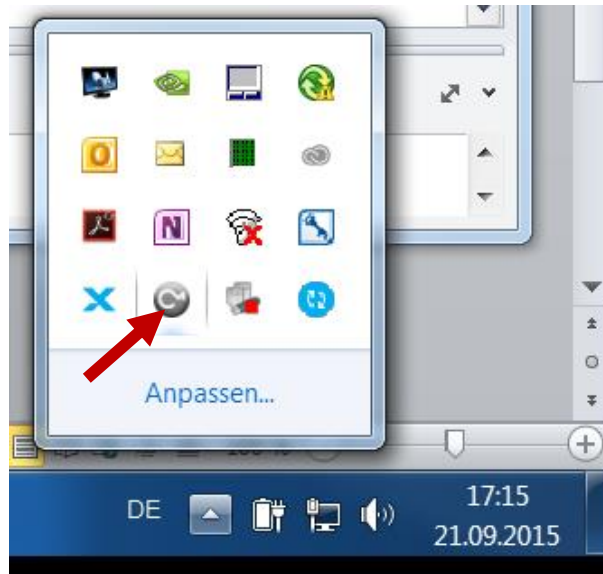
Content

1. Setup on Server Side 3

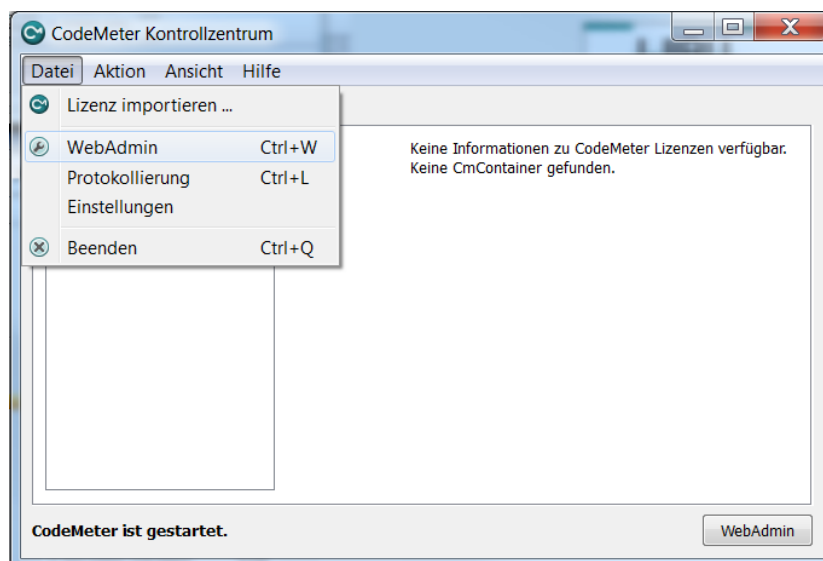
2. Setup on Client Side..... 5

1. Setup on Server Side

- Plug the D-Lab dongle into the computer you intend to use as the license server
- Install either D-Lab on the server or download the latest Codemeter Runtime (<http://www.codemeter.de/de/service/downloads.html>) and install it (the Codemeter Runtime is part of the D-Lab installation)
- Open the Code-Meter Control Center



- Open File → WebAdmin



Network License

- In the Web-Interface go to “Settings→Server” and enable “Start Network Server”
- Press “Apply”



- Note the IP-Address of the server-computer (Hint: the IP address shown by the Web-Interface might be wrong sometimes. It is recommended to check the IP-Address separately, e.g. “cmd.exe → ipconfig”)
- Turn off the Firewall on the server or set an Exception for the Port-Number shown in the Web-Interface

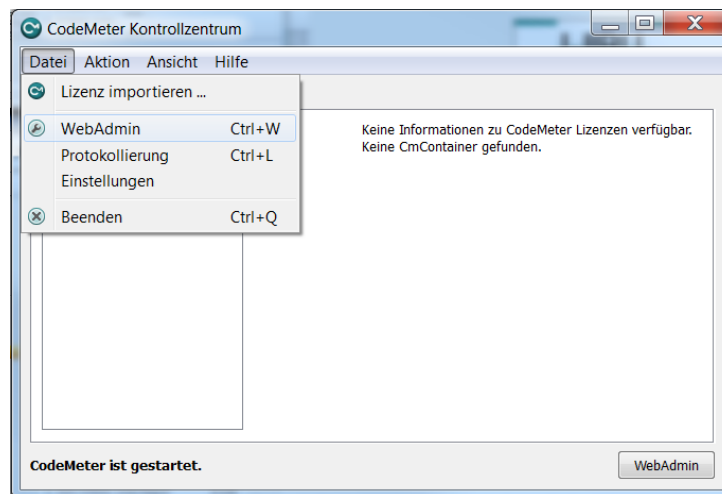
Note: You only have to perform the server configuration once.

2. Setup on Client Side

- The client computer (on which D-Lab is supposed to run) must be in the same network as the server
- Open the Code-Meter Control Center

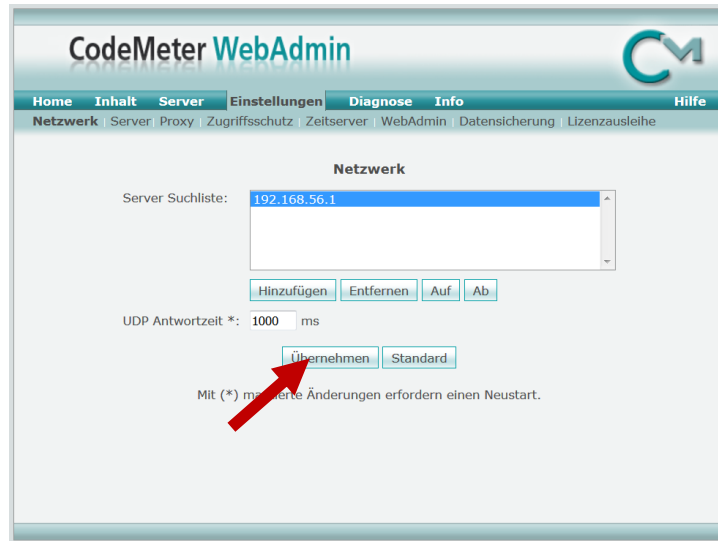


- Open File → WebAdmin

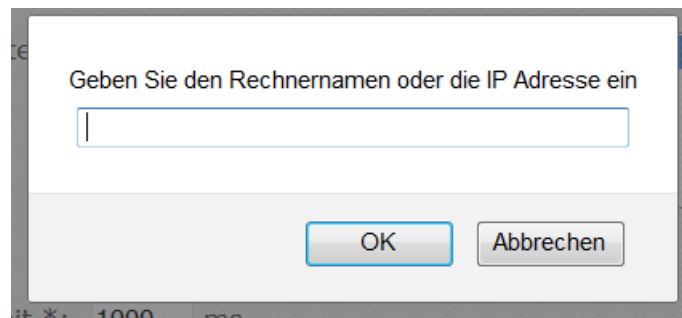


Network License

- In the Web-Interface go to “Settings→Network” and “Add” a new network connection to the server



- Fill in the IP-Address of the Server-Computer and Select “Apply”
-



- Now the network License should have been obtained and it should be possible to start D-Lab