

More Information

Descripton	Article ID
MediBalance Pro test- and training system	2542-SET-GB
<p>The system contains:</p> <ul style="list-style-type: none"> • MediBalance Pro platform • MediBalance Pro software (on CD-ROM) 14 excercises + 1 optional excercise (ZUKOR Air) • USB-Isolator (for connection between MediBalance Pro platform and computer) plus connection cables • User's manual • Bag for transportation • Balance pad (additional pad for measuring and training) • Frame (space saving, collapsible and adjustable in height) - designated use: Clients can hang on to it, if they feel vertigo or they are afraid to fall 	
Please ask for prices for laptops that fulfill the computer requirements.	

Details

Dimensions (width x height x depth) of MediBalance Pro Plattform	47,7 cm x 7,5 cm x 39,5 cm (viewed from the top edge - from the USB connector socket) with additional cushion: 14 cm height
Weight	3,65 kg (without additional cushions)
Dimensions of the unfolded support frame (width x height x depth)	Height of 77 cm up to max 95 cm adjustable in eight steps Distance between the handles: 45 cm
Weight	3 kg
Specials	Anti-slip surface underneath the permanently installed cushion and the feet of the support frame
Requirements	MediBalance Pro platform and support frame can be loaded up to 125 kg.
Computer requirements	Visit www.pc.meditech.de



Information about

- new developments
- optional modules
- and more designated use

please find in internet
www.balance.meditech.de



Characteristic value	Sway	Velocity	Area
Step 1	3,90 mm	7,21 cm/s	1,36 cm²
Step 2	9,03 mm	11,87 cm/s	7,48 cm²
Step 3	6,11 mm	14,91 cm/s	6,25 cm²
Step 4	6,16 mm	18,07 cm/s	9,30 cm²

Risk of tumbling assessment
The risk assessment score is at 2,7. According to the risk score there is an intermediate probability for tumbling.

Romberg ratio:
The Romberg ratio is a measure for balance and is calculated by dividing the swept area assessed with eyes closed by the swept area obtained with eyes closed.
Romberg ratio 2 (without cushion): 5,52
Romberg ratio 2 (with cushion): 1,46

For further information please contact us:

MediTECH Electronic GmbH
Langer Acker 7
D-30900 Wedemark
www.meditech.de

Tel.: +49-(0)5130-97778-0
Fax: +49-(0)5130-97778-22
service@meditech.de

MediBalance Pro – Balance Analysis and Enhancement



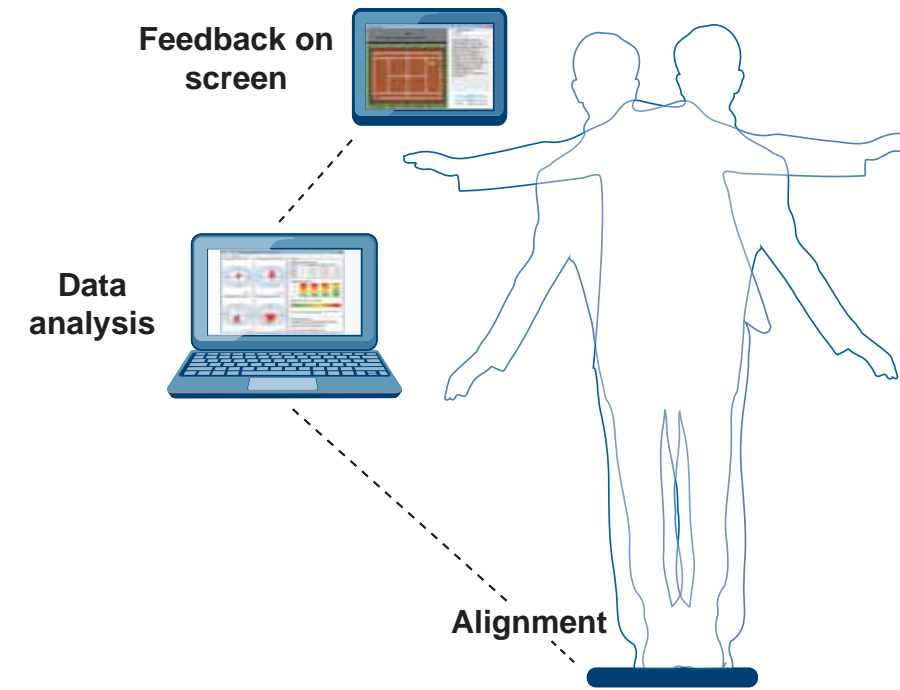
Dear customer,

MediBalance Pro provides an accurate test of balance / coordination, and a refined and differentiated analysis of the creep behavior and the stability of your client under various conditions as well as a coordinating training.

Software receives measurement data during a session recorded with Medicare Balance Pro platform and provides these results graphically and statistically:

- The system provides objective measures for the actual performance of the vestibular, the visual and the proprioceptive system (the latter with usage of the cushion).
- With twelve screens training can train the client balance, balance, body awareness and mastery as well as various other coordinative concentrative and motor skills - he does not even notice that he is in training.

In a client management, the data and results stored and available for evaluation purposes.



What's going on during the test?

The test protocol consists of a four-step procedure. The movements of the client will be recorded and used to evaluate:

1. Measuring with eyes open, the client stands on the platform using both legs.
2. Measuring as before but with eyes closed.
3. Measuring with eyes open, the client stands on the platform using both legs with a special cushion for destabilization between him and the platform.
4. Measuring as before but with eyes closed.

With the help of a plurality of individually adjustable training monitors the MediBalance Pro provides targeted opportunities for promoting an unobtrusive and secure base behavior.

What's going on during the training?

Depending on the individual requirements of the doctor decides which specific training steps are particularly well suited. This gives the client, for example, an individual training to improve your standing and walking safety. The difficulty level can be adjusted to reflect current abilities and so the training can be optimized. On a computer monitor static or dynamic tasks are set to be met by the client. It could be the task of a mobile, virtual ball deliberately to put on a particular point, or alternatively to push into fields. Along the way the train clients the ability to focus on tasks and respond in a targeted manner.

Which results can be expected?

A comprehensive evaluation module in which each evaluation desired information at a click can be added or de-rounds out this powerful system. So there the evaluation statements on the average fall risk of the client, the ability to coordinate with specific impulses of its movement and to keep his balance. The results are presented meaningful in a graphical and statistical way.

Last but not least ...

MediBalance Pro weighs about three and a half kilograms, only powered by USB power supply (no external power supply needed). As a truly mobile solution you can apply it wherever needed in a very flexible fashion. It is a universal test and training solution for ENT specialists, clinical rehab, other health care professionals as well as professional sports and fitness institutes.

